

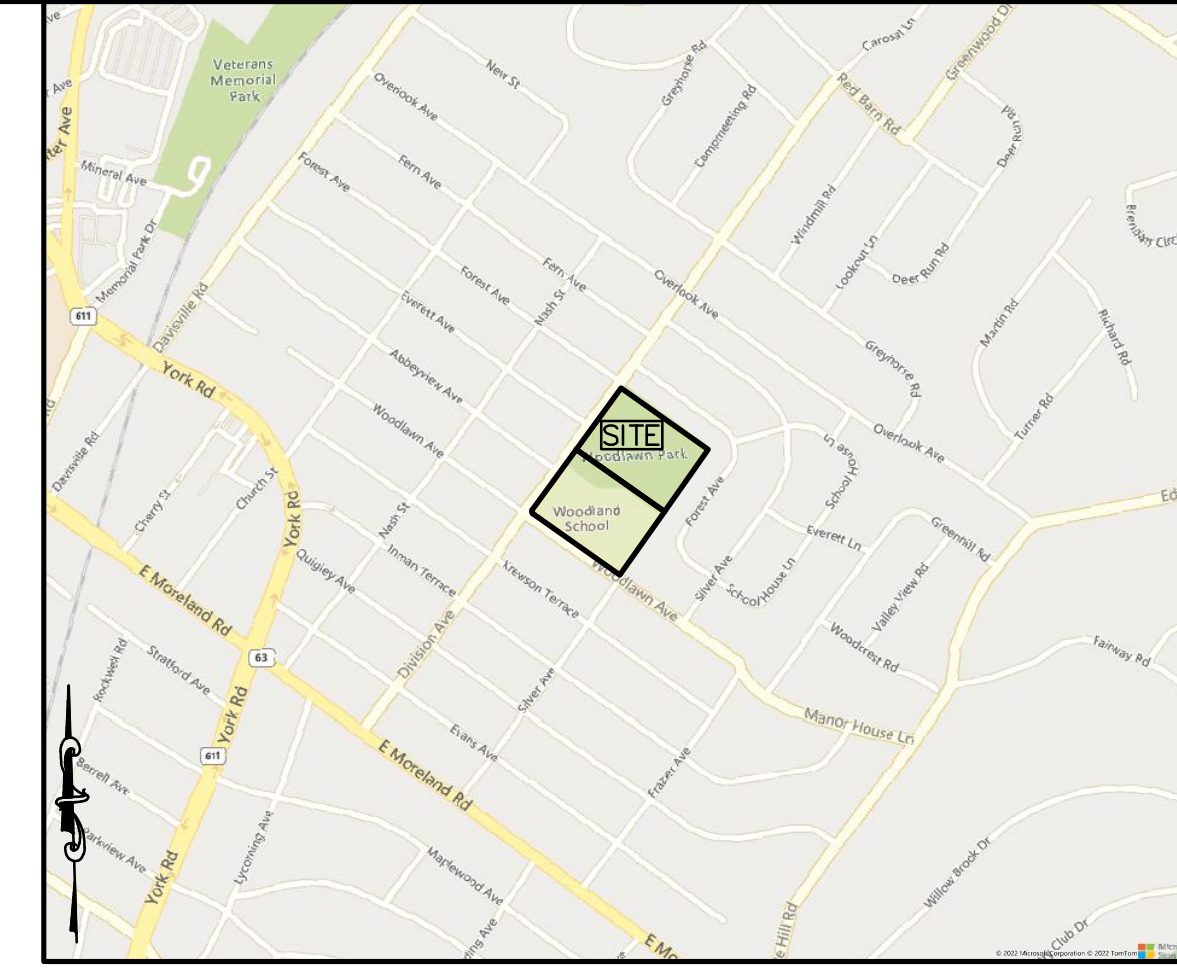
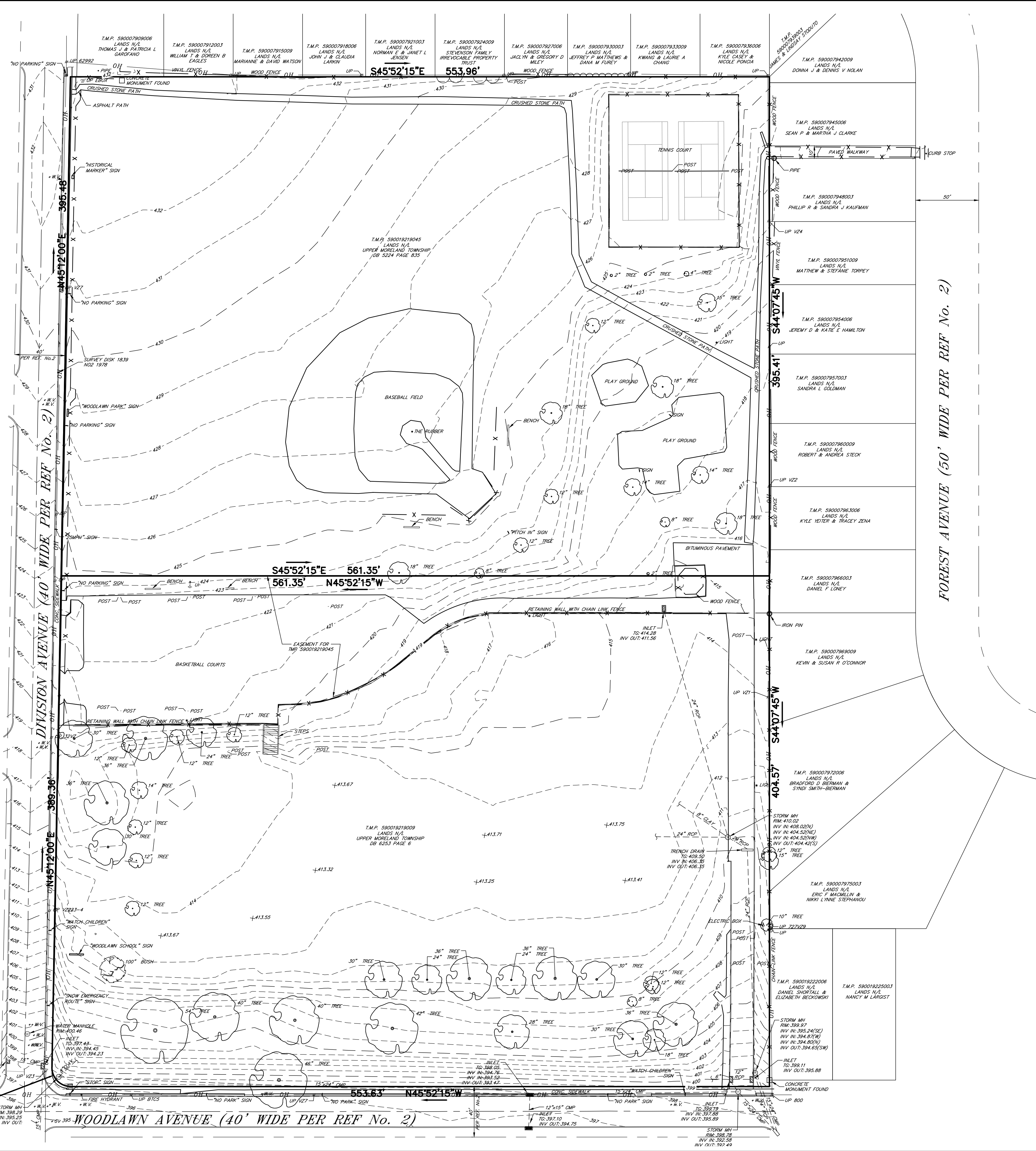
J:\SURVEY\PROJECTS\2021\2111058 Woodlawn School\Drawings\Production Drawings\2111058 EXE.dwg Layout: 24 x 36 SURVEY Plotted By: droberts, on Fri Nov 18, 2022 at 9:37am

PENNSYLVANIA ONE CALL SYSTEM, INC.  
925 Fern Run Road  
West Mifflin, Pennsylvania  
15122 - 1078



BEFORE YOU DIG ANYWHERE IN PENNSYLVANIA CALL 1-800-242-1776  
NON-MEMBERS MUST BE CONTACTED DIRECTLY  
PA LAW REQUIRES THREE WORKING DAYS NOTICE TO UTILITIES BEFORE YOU EXCAVATE, DRILL, BLAST OR DEMOLISH  
SERIAL NO. 20222981881

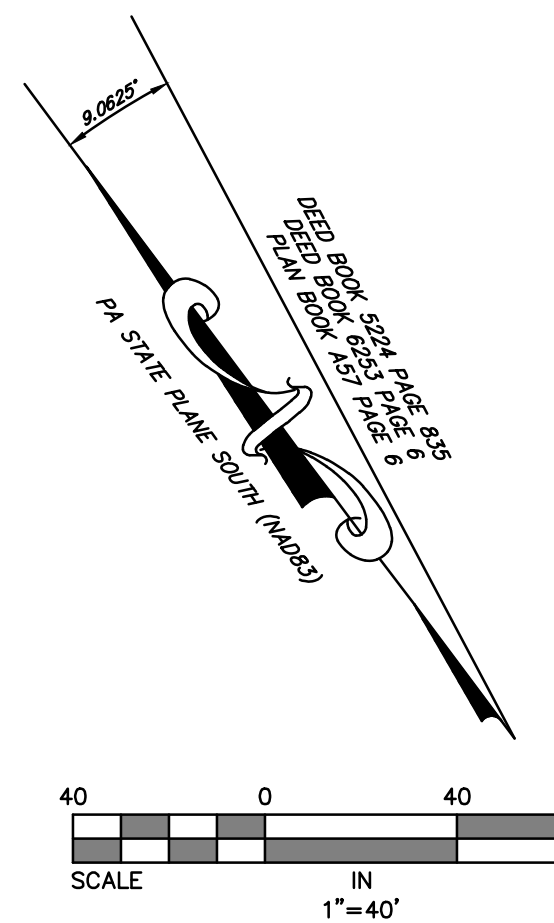
R=15.00'  
L=23.84'  
CH=21.41'  
NO 20'17"W



LOCATION MAP  
SCALE: 1"=1000'  
1000 00 1000 2000  
SCALE IN FEET

- GENERAL SURVEY NOTES:**
- PROPERTY KNOWN AS TAX PARCEL #500019219009 & 590019219045 AS SHOWN ON THE TAX MAP OF THE TOWNSHIP OF UPPER MORELAND, COUNTY OF MONTGOMERY, COMMONWEALTH OF PENNSYLVANIA.
  - THIS PLAN IS BASED ON A FIELD SURVEY PERFORMED BY GILMORE & ASSOCIATES, INC. ON JUNE 28, 2022 AND OCTOBER 20, 2022, AND THE REFERENCED INFORMATION LISTED HEREON. IT WAS PREPARED WITHOUT THE BENEFIT OF A TITLE REPORT.
  - SUBJECT TO COVENANTS, RESTRICTIONS AND/OR EASEMENTS EITHER WRITTEN OR IMPLIED.
  - VERTICAL DATUM IS NAVD88 AND WAS ESTABLISHED BY GLOBAL POSITIONING SYSTEM (GPS) WITH OBSERVATIONS REFERENCED TO THE KEYNET-GPS VIRTUAL REFERENCE STATION SYSTEM.
  - HORIZONTAL DATUM IS BASED ON THE PENNSYLVANIA STATE PLANE COORDINATE SYSTEM (NAD 83) ESTABLISHED BY GLOBAL POSITIONING SYSTEM (GPS) WITH OBSERVATIONS REFERENCED TO THE KEYNET-GPS VIRTUAL REFERENCE STATION SYSTEM.
  - LOCATIONS OF EXISTING UNDERGROUND UTILITIES/FACILITIES SHOWN HEREON HAVE BEEN DEVELOPED FROM ABOVE GROUND OBSERVATION OF THE SITE. NO EXCAVATIONS WERE PERFORMED IN PREPARATION OF THIS DRAWING. THEREFORE ALL UTILITIES SHOWN SHOULD BE CONSIDERED APPROXIMATE IN LOCATION, DEPTH, AND SIZE. THE POTENTIAL EXISTS FOR OTHER UNDERGROUND UTILITIES/FACILITIES TO BE PRESENT WHICH ARE NOT SHOWN ON THIS DRAWING. ONLY THE VISIBLE LOCATIONS OF UNDERGROUND UTILITIES/FACILITIES AT THE TIME OF THE FIELD SURVEY SHALL BE CONSIDERED TRUE AND ACCURATE. COMPLETENESS OR ACCURACY OF UNDERGROUND UTILITIES/FACILITIES ARE NOT GUARANTEED BY GILMORE & ASSOCIATES INC.
  - ALL CONTRACTORS WORKING ON THIS PROJECT SHALL VERIFY LOCATION AND DEPTH OF ALL UNDERGROUND UTILITIES/FACILITIES PRIOR TO THE START OF WORK AND SHALL COMPLY WITH THE REQUIREMENTS OF P.L. 852, NO. 287, DECEMBER 10, 1974 AS LAST AMENDED ON APRIL 28, 2018, PENNSYLVANIA ACT 50, GILMORE AND ASSOCIATES INC. HAS OBTAINED A PA-ONE CALL SERIAL NUMBER 20222981881 (2022) FOR DESIGN PURPOSES ONLY.

- REFERENCES:**
- TAX MAP FOR THE TOWNSHIP OF UPPER MORELAND, COUNTY OF MONTGOMERY, COMMONWEALTH OF PENNSYLVANIA.
  - PLAN ENTITLED "FINAL PLAN OF SUBDIVISION, UPPER MORELAND TOWNSHIP SCHOOL DISTRICT", DATED 12/16/1996, LAST REVISED 3/31/1997, PREPARED BY EASTERN/CHADROW ASSOCIATES, INC.
  - DEED BOOKS AS NOTED.



**GILMORE & ASSOCIATES, INC.**  
ENGINEERING & CONSULTING SERVICES  
5100 DELAWARE STREET, SUITE 100, WILKESBORO, PA 18251-1000  
www.gilmore-inc.com  
ONLY THOSE PLANS INCORPORATING THE PROFESSIONAL SEAL SHOULD BE CONSIDERED OFFICIAL AND RELIED UPON BY USER. THIS PLAN IS NOT TO BE REPRODUCED, COPIED, REVISION, MODIFICATION, OR USE, WITHOUT THE CONSENT OF GILMORE & ASSOCIATES, INC. IS PROHIBITED.  
© COPYRIGHT 2022 GILMORE & ASSOCIATES, INC. ALL RIGHTS RESERVED

REV.	DESCRIPTION	DATE	BY

EXISTING FEATURES PLAN  
**WOODLAWN SCHOOL**  
T.M.P. #590019219045 &  
T.M.P. #590019219009  
UPPER MORELAND TOWNSHIP, MONTGOMERY COUNTY, PENNSYLVANIA

**GILMORE & ASSOCIATES, INC.**  
ENGINEERING & CONSULTING SERVICES

PROJECT No.: 21-11058  
TAX MAP PARCEL No.: 590019219009 & 590019219045  
TOTAL AREA: N/A  
TOTAL LOTS: 2  
DATE: 11/18/22  
SCALE: 1"=40'  
DRAWN BY: SRT  
CHECKED BY: DFR  
SHEET No.: 1 OF 1

NOT APPROVED FOR CONSTRUCTION