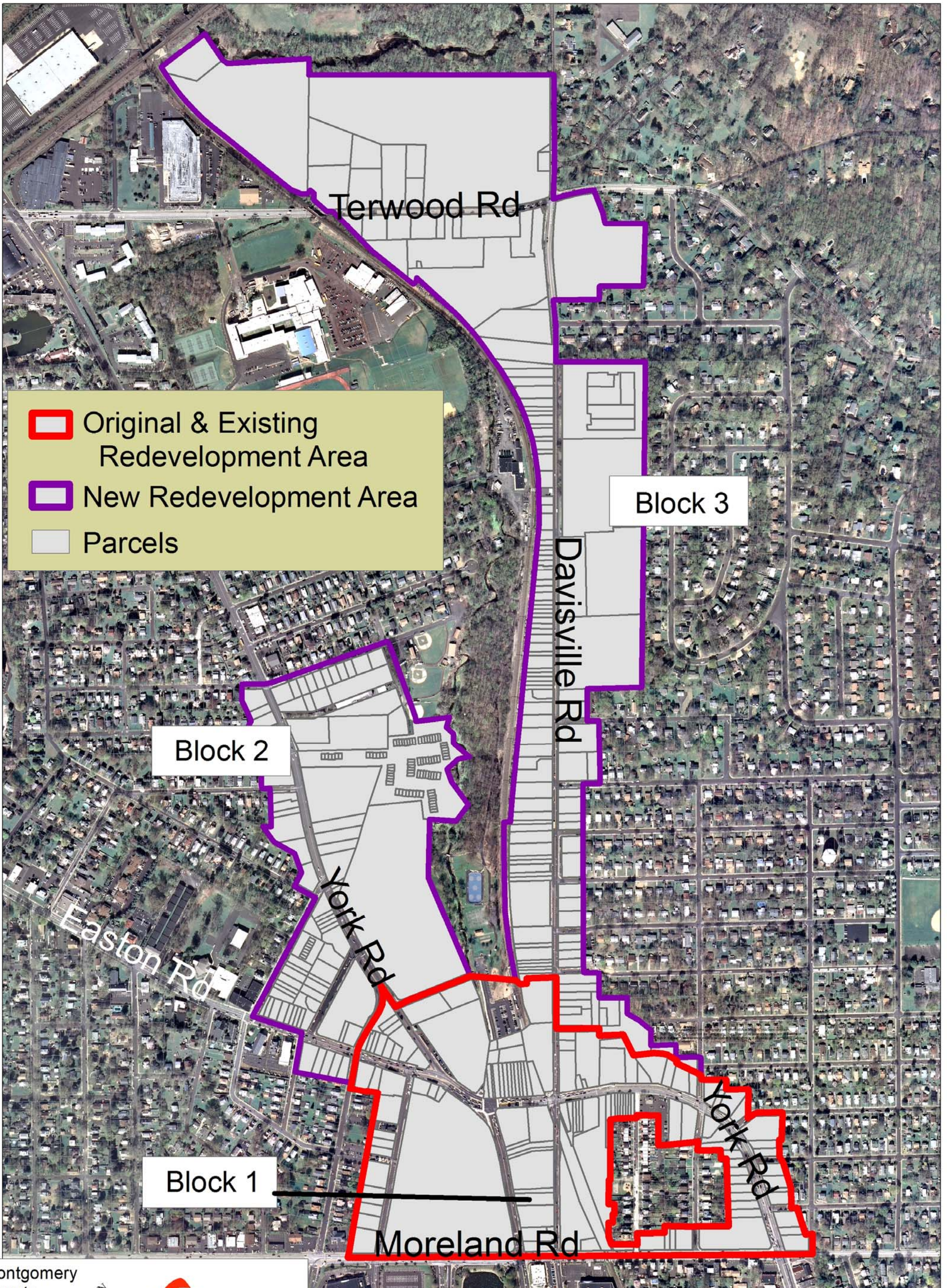


# Upper Moreland Redevelopment Area, 2015



Montgomery  
County  
Planning  
Commission



Montgomery County Courthouse - Planning Commission  
PO Box 311 Norristown PA 19404-0311  
(p) 610.278.3722 (f) 610.278.3941  
[www.montcopa.org/plancom](http://www.montcopa.org/plancom)

0 0.125 0.25 0.5  
Miles